

# WILLOW TOWN HOME

The luxury two-bedroom, two-bathroom town homes at Porter Hills Village offer spaciousness and beauty. Most include lower levels with large living areas and guest accommodations. High ceilings, large windows, gas fireplaces, back patios and decks, laundry rooms and attached two-stall garages are some of the many features that make the town homes so appealing. The town homes overlook beautiful wooded areas and are within walking distance to all the amenities at Porter Hills Village.

## Main Floor

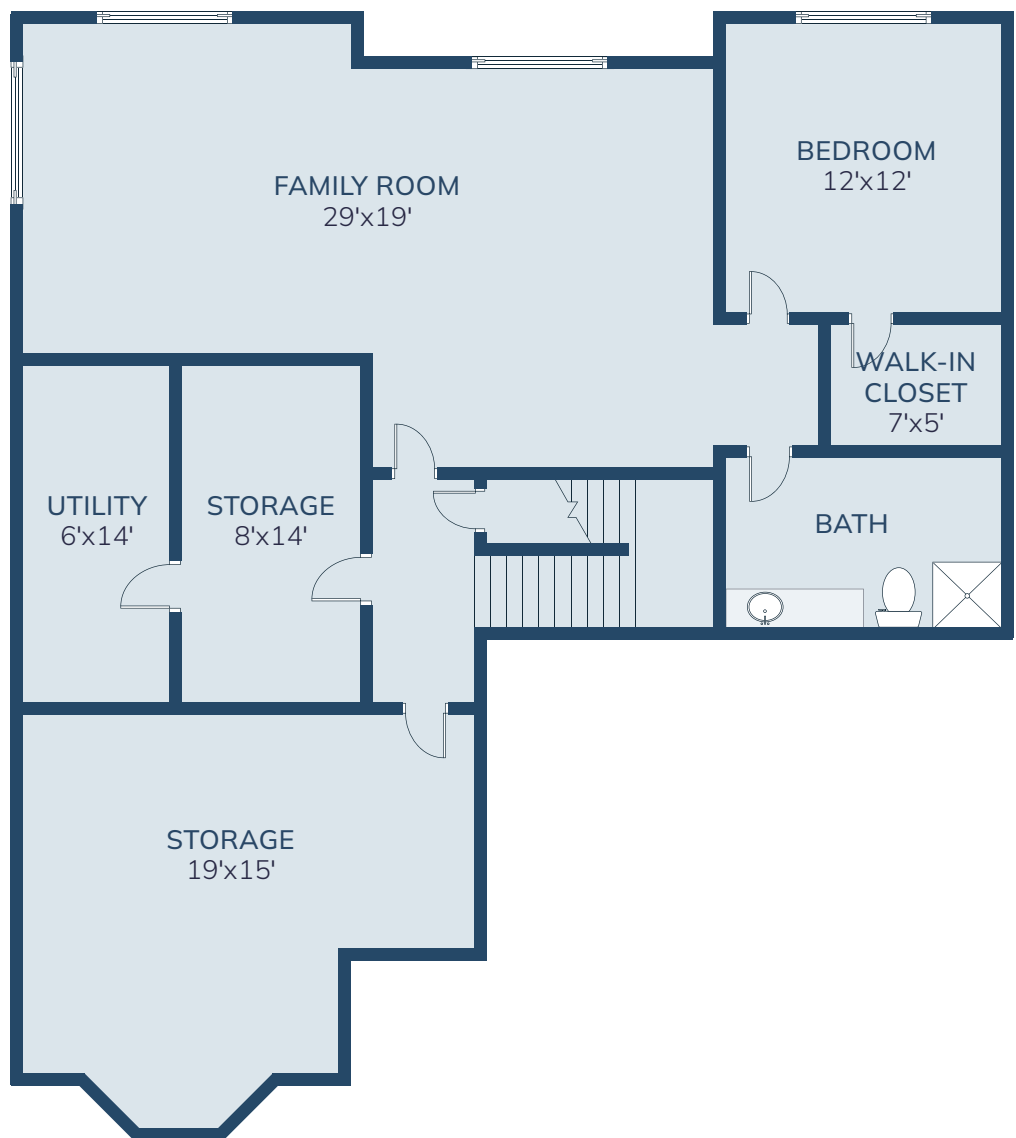
1,655 Sq. Ft.

(Not including lower floor)



# WILLOW TOWN HOME

Lower Floor



**PORTER HILLS**  
VILLAGE  
By Brio Living Services